



# YM IDIS | **CORPORATE PRESENTATION**

2024

[www.ymidis.com.tr](http://www.ymidis.com.tr)

## CONTENT

A thick green curved bar on the left side of the slide, starting from the top and curving downwards.A thin green horizontal line with a heartbeat pulse at the right end, extending across the top of the content area.

- Yapı Merkezi Chronology
- Organization (Project Execution – Product Development & R&D – Maintenance & Supervision)
- Engineering Solutions
- Projects Portfolio
- Products (Signaling Product Portfolio - Telecom Product Portfolio – Support Systems Product Portfolio)



1965



Research & Design

1969



General Contracting

1978



Prefabrication

1987



Prestressing

1994



Real Estate Development

1995



Education

1996



Pipe Production

1998



Railway Superstructure

1998



Holding

2012



Signal & Telecom Electromechanical Systems

**YM IDIS**, carries out its engineering activities with 3 main departments  
**Project Execution, Product Development and R&D and Maintenance/Supervision**



**90+**

Employees in Headquarters[ 80% Engineers ]  
+ Project Sites approximately **50** Engineer and Technicians



**11**

Completed Railway Signal & Telecom EPC Projects



**3**

Patent & Utility Model



**10**

Innovative Products [All have been applied in the projects worldwide]



**9**

Ongoing Railway S&T and Highway E&M projects

## Products

### Signaling Systems

- id-IXL Interlocking
- id-LX Level Crossing
- id-CTC Control Center Software

### Telecommunication Systems

- Radio Frequency Repeating

### Auxiliary Systems

- Ticketing and Fare Collection System
- Wagon Management and Observation System
- Freight Management System
- Environmental Control System
- Earthquake Detection and Health Monitoring

### Defence Technologies

- Rocket Launching System

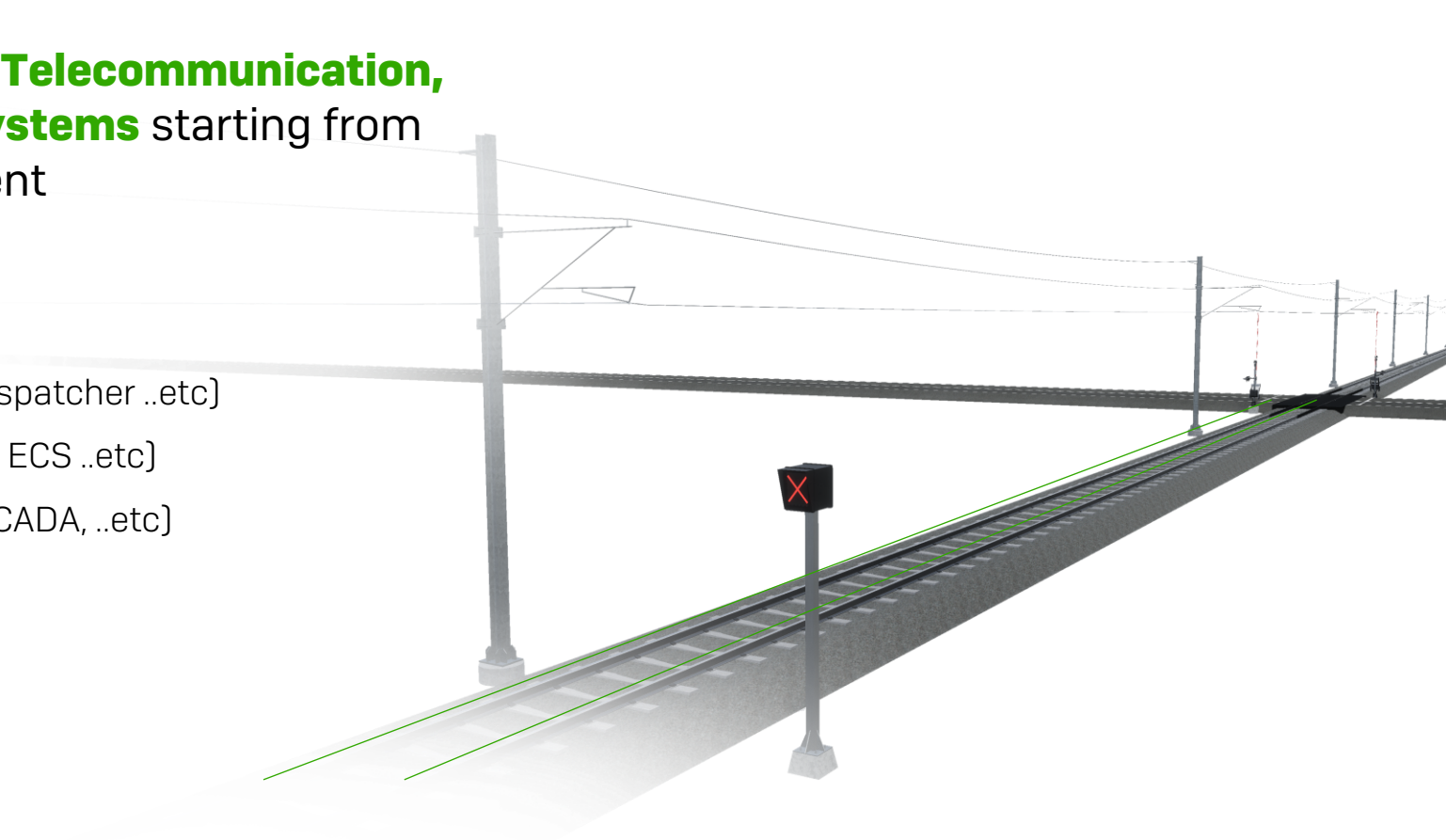
## Project Execution

- Automatic Incident Detection
- Radio Systems
- Closed Circuit TV
- Public Address
- Fiber Optic Detection
- Network
- LED Lighting
- Passenger Information
- Intelligent Transportation System
- Fire Detection
- Telephone System
- SCADA
- Access Control System
- GSM-R
- Dispatcher System
- Low Voltage Power Supply

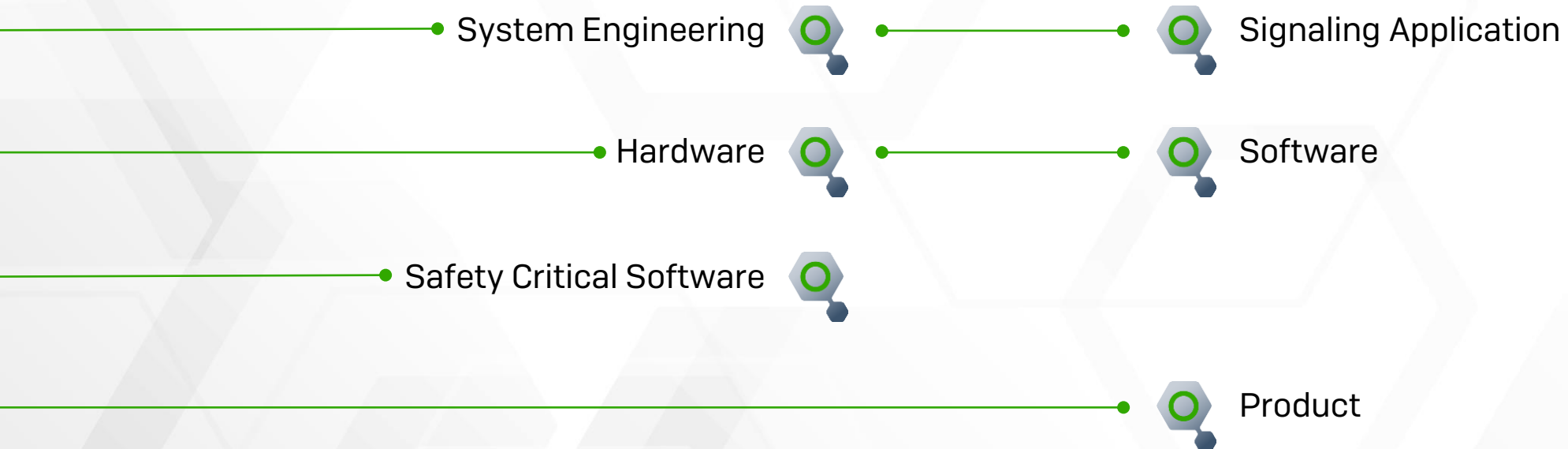
**Maintenance / Supervision Services**

○ Project management for **Signalling, Telecommunication, Electromechanical and Auxiliary Systems** starting from design up to the hand over to the client

- Signalling Systems (ETCS L1-L2, ITS, ATP )
- Telecommunication (Network, RF, GSM-R, Dispatcher ..etc)
- Auxiliary Systems (CCTV, PAS, PIS, Ticketing, ECS ..etc)
- Electromechanical (Lighting, Fire Fighting, SCADA, ..etc)



- Carrying out R&D studies and developing products on Transportation Systems and Defence
- **System design, Software development activities, Production, Testing and Commissioning** activities of the products within the scope of the project





# Completed Projects



Yerköy – Sivas Yüksek High Speed Line

 **Turkey**

Metro Istanbul T4 Tram Line

 **Turkey**

Turkish State Railways Çamlık Station Mainline

 **Turkey**

Bursa Terminal T2 Tram Line

 **Turkey**

Irmak- Karabük – Zonguldak Railway Line

 **Turkey**

Eurasia Tunnel

 **Turkey**

Habras Warhead Rail System Test Infrastructure

 **Turkey**

Şahinbey Tunnels Electromechanical Systems

 **Turkey**

Darüsselam – Morogoro Railway Line

 **Tanzania**

Bir Touta – Zeralda Railway Project

 **Algeria**

Awash – Weldia – Hara Gebeya Railway Project

 **Ethiopia**



# Ongoing Projects



Morogoro - Makutupora Railway Line

 **Tanzania**

Makutupora-Tabora Railway Line

 **Tanzania**

Tabora-Isaka Railway Line

 **Tanzania**

Isaka – Mwanza Railway Line System Supplier and Integration Support

 **Tanzania**

Zambia – Livingstone - Chingola Railway Line

 **Zambia**

Alayunt- Afyon – Konya Railway Line

 **Turkey**

1915 Çanakkale Bridge and Highway Intelligent Transportation Systems

 **Turkey**

Niğde – Pozantı Highway and Tunnels Electromechanical Systems

 **Turkey**

Bursa Emek-Şehir Hastanesi Light Rail Line

 **Turkey**

**1** Türkiye

- 1915 Çanakkale Bridge and Highway
- Yerköy - Sivas HSL
- Niğde - Pozantı Highway and Tunnel
- Alayunt - Afyon - Konya Railway Line
- Bursa Kent Meydanı - Terminal Tram Line
- Çamlık Station Signaling
- Mescid-i Selam Signaling
- Eurasia Tunnel
- Habras Warhead Project
- Irmak - Karabük - Zonguldak Rehabilitation Project
- Şahinbey Tunnel
- Bursa Emek-Şehir Hastanesi Light Rail System

**2** Algeria

- Bir Touta - Zeralda Railway

**3** Ethiopia

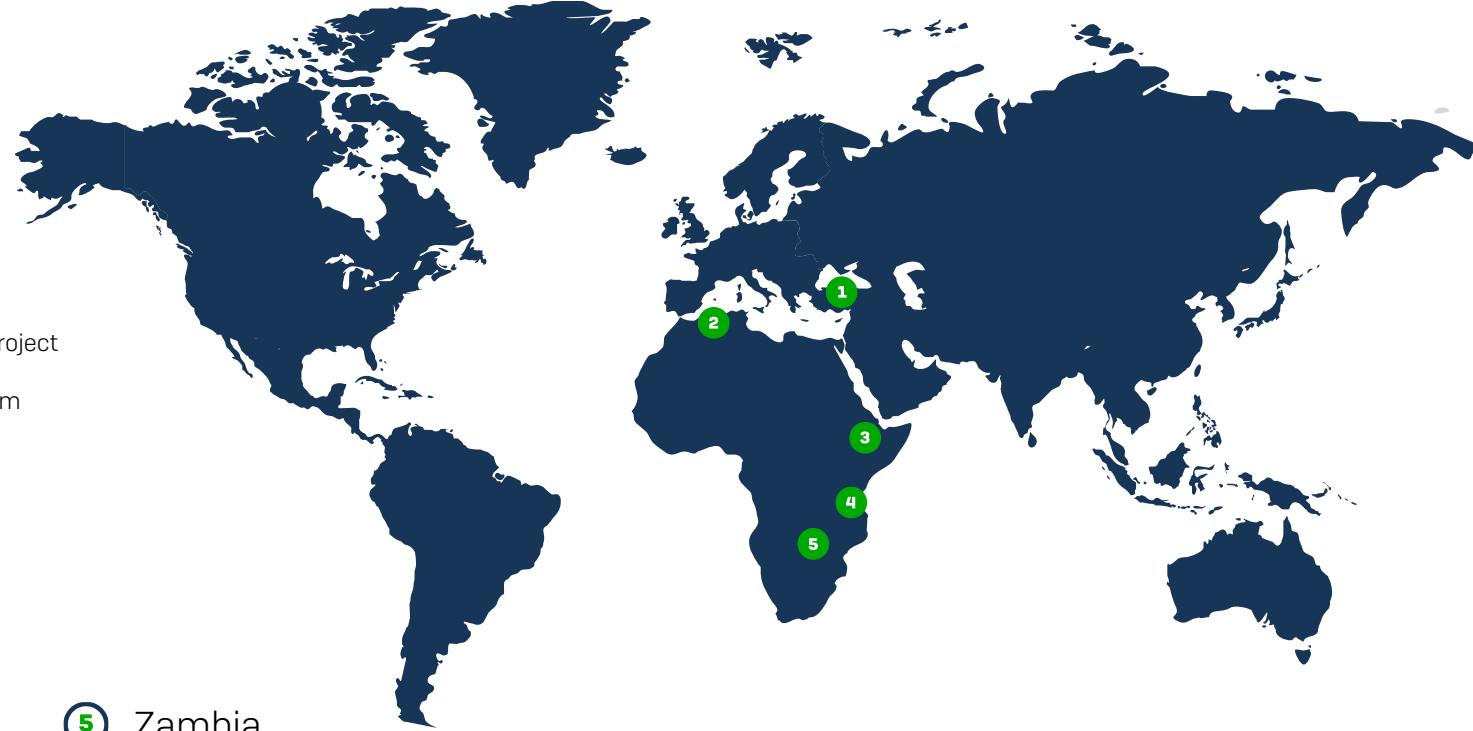
- Awash - Weldia Railway

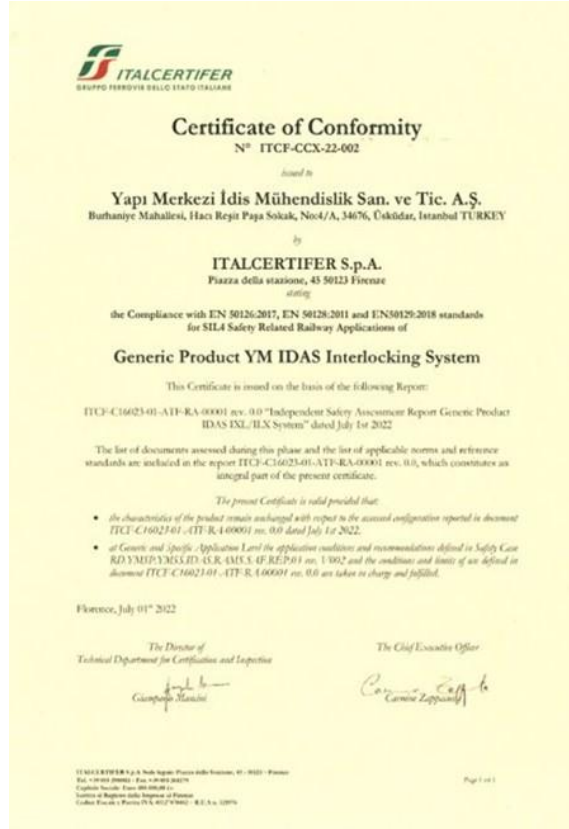
**4** Tanzania

- Dar es Salaam - Morogoro Railway
- Morogoro - Makutupora Railway
- Makutupora-Tabora Railway
- Tabora-Isaka Railway
- Isaka - Mwanza Railway IT Systems Supplier

**5** Zambia

- Zambia - Livingstone - Chingola Railway





Fail safe **SIL-4 Certified** system that ensures the safe operation of the railway line at full capacity



Ease of configuration, modularity and scalable structure enables the management of heavy traffic and complex railways



ETCS L1 compatible



The system controls and commands wayside equipment with a patent-pending technology



Safe system that aims to prevent accidents that may occur at the intersection of the railway and the highway

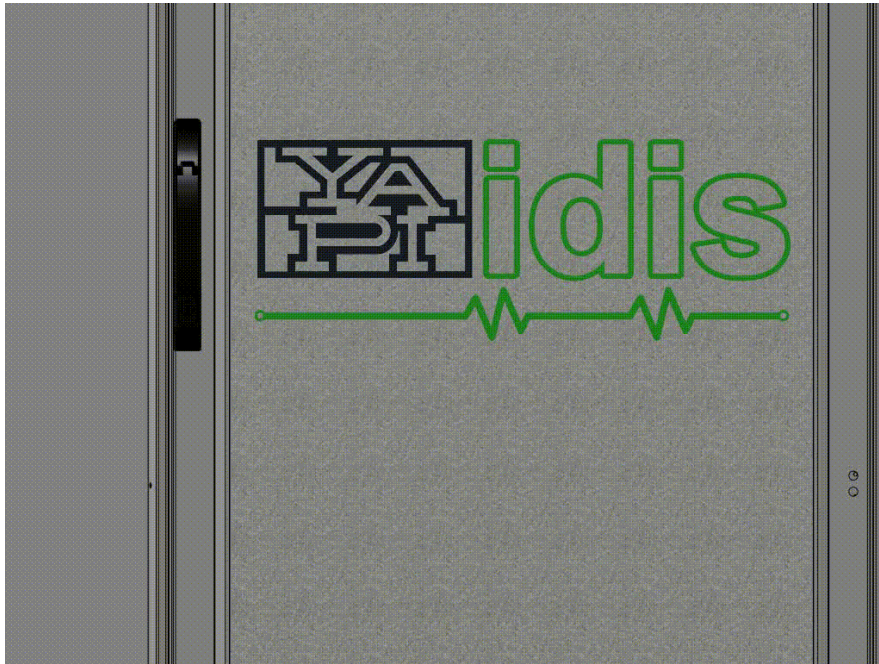
Aims to increase application flexibility, easily applicable and highly capable and can be configured according to the requirements of the end user

**SIL-4 Certified** according to CENELEC standards EN 50126, EN 50128 and EN 50129

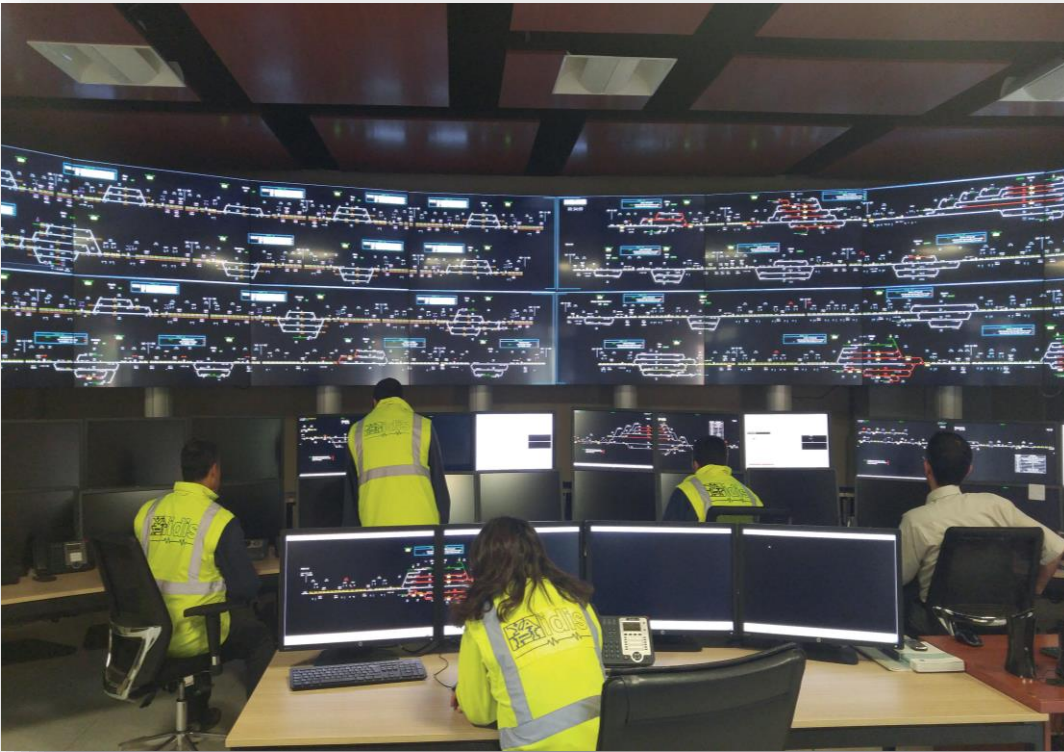
Application Types:

- Integrated with the Interlocking System id - IXL
- Standalone independent id - LX

Example of level crossing cabinet and analog control unit system.







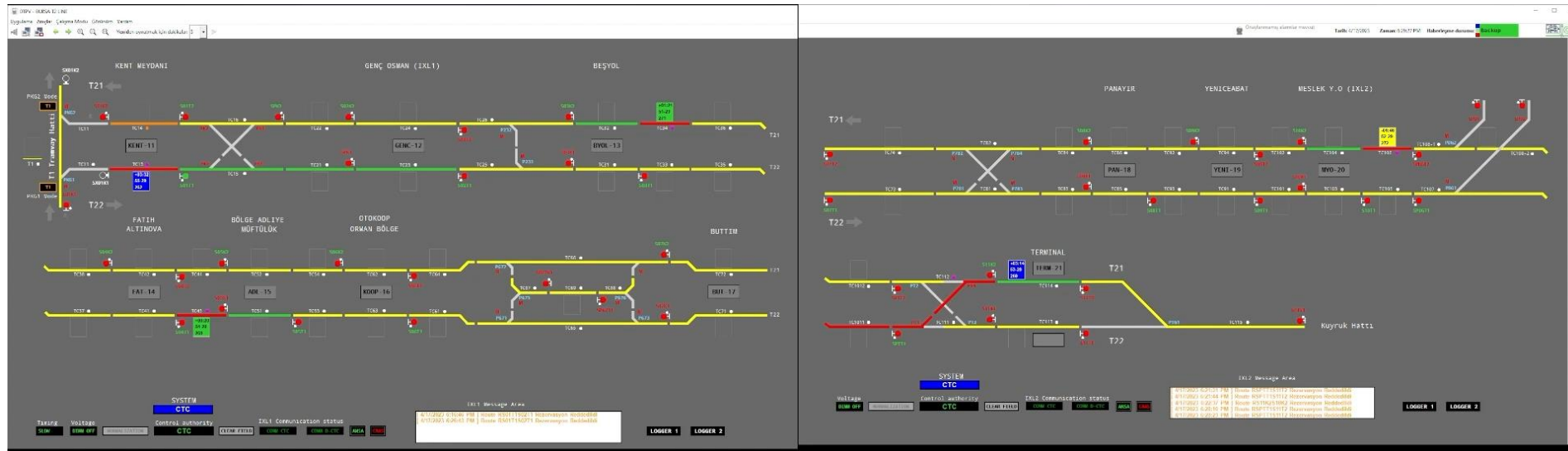
Ensuring central and local operation of traffic controllers in railways



Transmission of operating commands to the signaling system for the movement of trains, and visualizes the locations of the trains on the line and the status of the equipment along the line



Functions such as **tariff management**, automatic route setting functions, recorder, reporter, event monitoring and traingraph







The simulation interface displays a railway track layout with various signaling elements. At the top, there are five signal masts labeled SN 1 through SN 5. Below them are track segments labeled TD 1 through TD 9. A station platform labeled 'KENT MEYDANI' is visible with a digital display showing '03:00'. A train with the number 1745 is shown on the track between TD 12 and TD 13. Further right, another train with the number 0754 is on the track between TD 16 and TD 17. Below this, there are more track segments labeled TD 10 through TD 18, with signal masts SN 2 and SN 6. The bottom section of the interface shows a more complex track layout with segments TD 10, TD 30, TD 43, and TD 10. A train with the number 34 is on the track between TD 10 and TD 56. Signal masts SN 2 are positioned along these tracks. At the bottom of the interface, there is a control panel with the following elements:

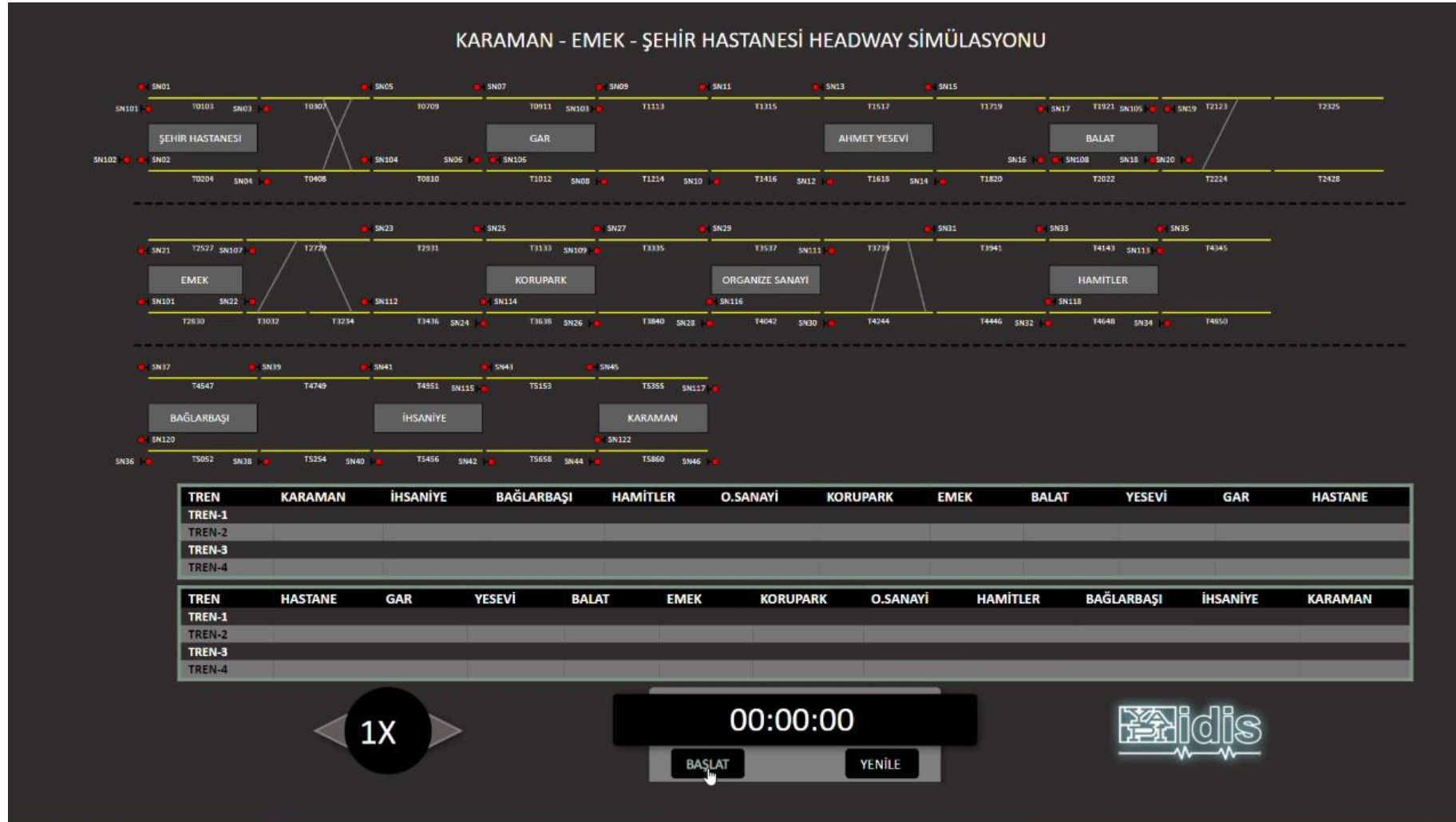
- TIMING** button
- DIMM OFF** button
- NORMALISATION** button
- REQUESTS** button
- LOGS** button
- PLAYBACK** button

The control panel also displays a list of events:

TD20	BLOCK REQUEST	ADMIN	11:06 1.1.2024
TD20	BLOCK REQUEST	ADMIN	11:26 1.1.2024
TD20	CANCEL BLOCK REQUEST	ADMIN	11:45 1.1.2024
TD20	CANCEL BLOCK REQUEST	ADMIN	11:45 1.1.2024
TD20	CANCEL BLOCK REQUEST	ADMIN	11:45 1.1.2024



TD20	BLOCK REQUEST	ADMIN	11:06 1.1.2024
TD20	BLOCK REQUEST	ADMIN	11:26 1.1.2024
TD20	CANCEL BLOCK REQUEST	ADMIN	11:45 1.1.2024
TD20	CANCEL BLOCK REQUEST	ADMIN	11:45 1.1.2024
TD20	CANCEL BLOCK REQUEST	ADMIN	11:45 1.1.2024





### **Radio Frequency Repeating System**

Propagation of the RF signal in tunnels [confined areas] and increasing the coverage of the signal. Providing communication with maintenance and operation channels, fire brigade, ambulance, law enforcement inside these areas.



### **Earthquake Detection and Structural Health Monitoring**

Detection of Earthquakes and evaluation of the damages occurred on the structures. Communicating with the CTC to ensure the safety of the operation. Accelerometer, tilt meter, strain gauge sensors etc.



### **Environmental Control System**

System to monitor remote locations [technical buildings, shelters] for fire detection, theft and status of critical equipment. Enabling operators to monitor the relevant area by performing environmental inspection with CCTV systems and generating audible and visual alarms



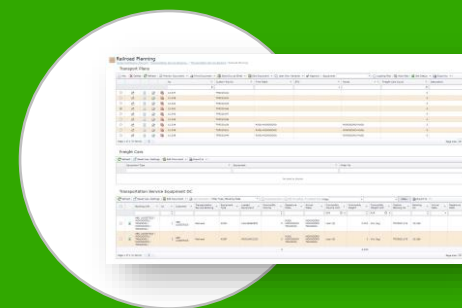
### **Ticketing and Fare Collection System**

Management of fare collection, luggage weighing and pricing, controlling entry and exits to the station areas. Integration to online payment systems, ERP according to end user requirements.



### **Wagon Management and Observation System**

Monitoring the position of wagons, scheduling maintenance plans. Stock control for spare parts and informing the operation and maintenance teams according to manufacturing and lead times. Integrated with on track sensors like HBD, HWD, DED etc.



### **Freight Management System**

Manages freight transportation activities within the railway. Controls and provides the operator with the financial and logistical information. Tracking the goods delivered, pricing and management of cargo system [bulk, parcel etc].



Innovated in Türkiye



Thank you

[www.ymidis.com.tr](http://www.ymidis.com.tr)