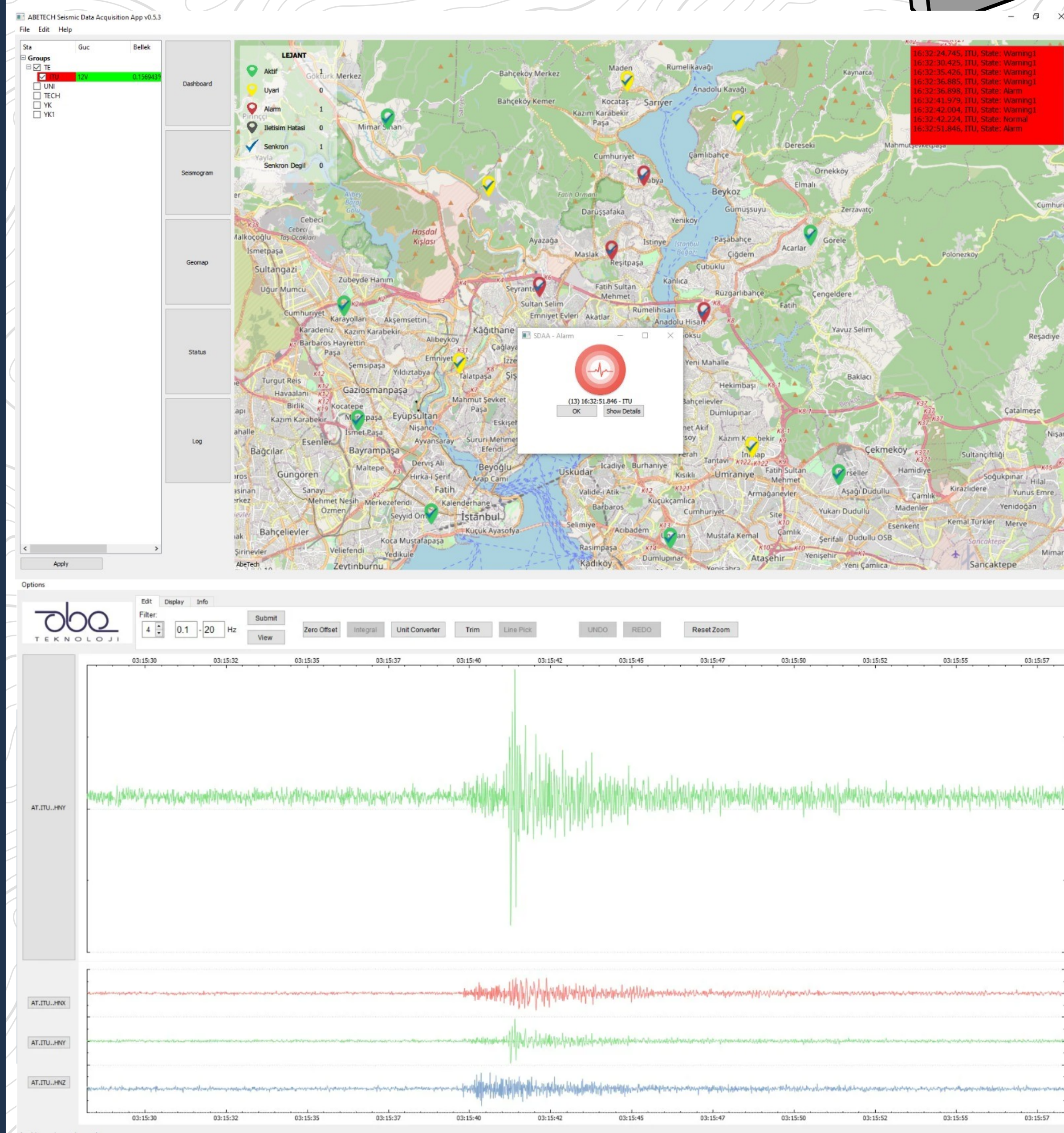


# HIGH SPEED RAILWAY EARTHQUAKE PROTECTION



**ALL in ONE SOFTWARE**  
**ACCELERATION DATA**  
**ALARM WARNING (LOCAL&CENTRAL)**  
**LOCAL&SERVER STORAGE/DATABASE**  
**DEVICE CONFIGURATION**



**POWER**  
**POWER INPUT: PASSIVE PoE - 24V DC**  
**POWER CONSUMPTION: ~ 2 W**

**INTERFACES**  
**NETWORK: ETHERNET**  
**PROTOCOL: SEEDLINK PROTOCOL FOR DATA INTERFACE**  
**TIME SYNCHROZATION : NTP AND GPS**

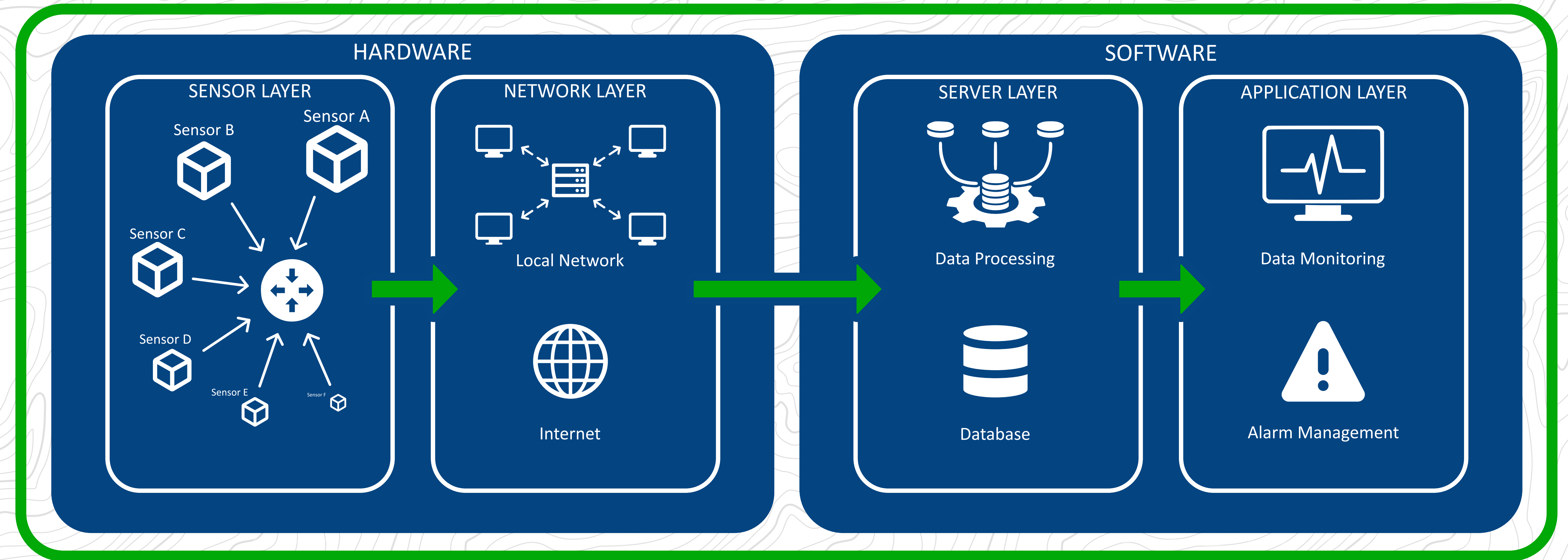


**MEASUREMENT**

**RANGE : ± 2g**  
**SAMPLING RATE : 100 & 200 Hz**  
**RESOLUTION: 3.9 µg**  
**MAXIMUM TEMPARATURE DRIFT: 0.15 mg/° C**  
**NOISE DENSITY: 22.5 µg/√ Hz**

**PHYSICAL**

**DIMENSIONS: 100x100x70 mm**  
**IP CLASS: IP67**  
**OPERATING TEMPERATURE : -20° C TO +85° C**



**FEATURES**

**THREE AXIS MEMS BASED ACCELEROMETRE**  
**DIGITAL OUTPUT**  
**TEMPERATURE COMPENSATION**  
**GPS FOR TIME SYNCHRONIZATION and TIME STAMPED ACCELERATION DATA**  
**RJ45 FOR POWER AND ETHERNET VIA POWER OVER ETHERNET (POE)**

**APPLICATIONS**

**HIGH SPEED RAIL NETWORKS**  
**EARTHQUAKE ALERT SYSTEM**  
**SEISMIC MONITORING**  
**STRUCTURAL HEALTH MONITORING**